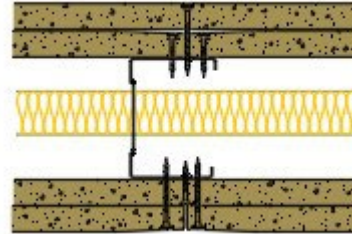


AS70-K-166(25) - SPEEDLINE System Data Sheet - Version V1 (24-10-23)

SPEEDLINE 70mm Acoustic 'C' Stud Partition
 @600mm Ctrs, with 2x Knauf 15mm Impact Panel
 each side, 25mm APR



System Performance Breakdown

Fire Resistance:

BS476 Part 22:1987:

Test Ref & Date or Applied Ref & Report:

Max Height:

Thickness:

Duty Grade: BS 5234: Part 2:1992:

Sound Insulation:

120/120 Minutes (Integrity/Insulation).

BRE 285458 - BRE Report P102396-1011B

Refer to Speedline Specification Clause

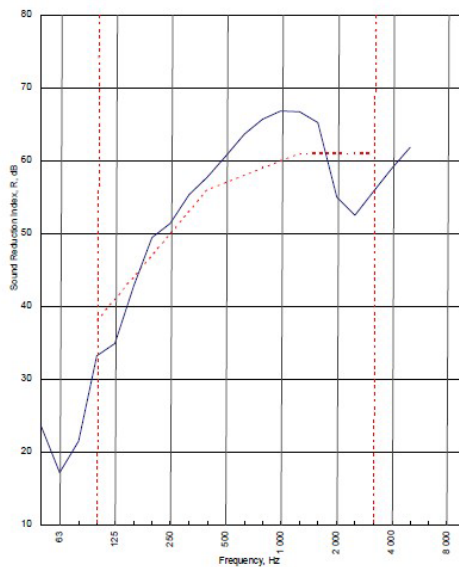
132 mm. (At Base Track, Excluding Finishes)

Severe - Annexes A-F

57 R_w dB, -7 Ctr Date Tested or Assessed Against - 22/08/2011






Test Code:
H17547AA
Test Date:
22/08/2011

Freq. Hz	R dB
50	23.4
63	17.1
80	21.4
100	33.2
125	34.9
160	42.8
200	49.4
250	51.3
315	55.4
400	57.7
500	60.6
630	63.6
800	65.7
1 000	66.8
1 250	66.7
1 600	65.2
2 000	65.0
2 500	62.5
3 150	55.7
4 000	59.0
5 000	61.8
6 300	
8 000	
10 000	



Rating according to BS EN ISO 717-1:1997	R_w (C;Ctr) = 57 (-3;-7) dB		
Evaluation based on laboratory measurement results obtained by an engineering method.	Max dev. 8.5 dB at 2 500 Hz		
	$C_{50-3150} = -8$ dB	$C_{50-5000} = -7$ dB	$C_{100-5000} = -2$ dB
	$C_{70-3150} = -20$ dB	$C_{70-5000} = -20$ dB	$C_{90-5000} = -7$ dB

TESTED AT ONE OF THE UKAS ACCREDITED LABORATORIES BELOW

- B.T.C (H-Ref on Graph) 
- B.R.E 
- AIRO 
- S.R.L 
- 

Customer: Metsec plc Hepsec Division



BTC 17547A: Page 9 of 11

SPEEDLINE Drywall Systems, Adsetts House, 16 Europa View, Sheffield Business Park, Sheffield, S9 1XH.

Tel: 0114 231 8030.

Email: enquiries@speedlinedrywall.co.uk

(As per the requirements set out in ISO/IEC 17025:2017 regarding test data the results stated have been carried out by voestalpine Metsec plc as part of the contract to supply Speedline Metal Sections to SIG Plc)